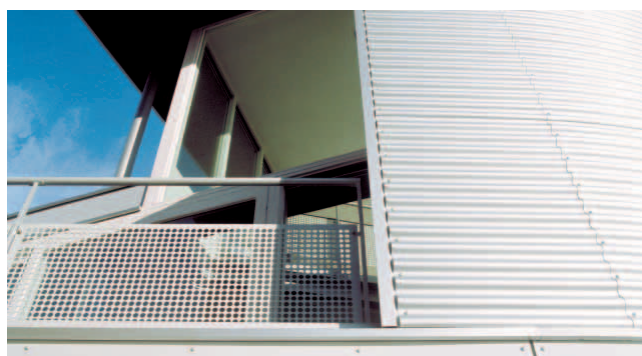


## Colorcoat® PVDF

---

### Thin coating solution for wall cladding



Colorcoat® PVDF is particularly well suited to building envelope applications such as wall cladding and panels, where good colour flatness and gloss retention are important.

- Smooth 25 µm coating offering good colour retention and stability.
- Galvanised substrate produced to EN 10326 / 10327 with a zinc metallic coating offering very good corrosion resistance.
- Available in 12 standard colours.
- High-performance reverse side backing coat specially formulated for use in construction applications.

#### Colorcoat® reassurance

The Colorcoat® brand provides the recognised mark of quality and expertise from Corus. Encompassing over forty years of innovation, strict testing procedures and manufacturing excellence, Colorcoat® provides a range of pre-finished steel products which have been used on countless projects worldwide.

# Colorcoat® PVDF

## Product performance

Colorcoat® PVDF is carefully manufactured in a controlled process to ensure consistent quality. Colorcoat® PVDF is suitable for wall cladding systems and panels.

The actual durability of Colorcoat® PVDF in any particular location will depend upon the exact specification. The use of Colorcoat® PVDF in distinctly marine and heavily industrialised environments is not recommended.

Colorcoat® PVDF is available in different coating thicknesses.

Corus has a range of Colorcoat® products suitable for different environments and applications.

## Guarantee period

A fit for purpose guarantee is available for up to 10 years.

The actual duration of the guarantee will depend on the environment, geographic location and application.

## Product testing

To ensure the integrity of Colorcoat® products, Corus uses laboratory tests to measure their performance against corrosion, effect of sunlight, chemicals and abrasion. All testing of products is carried out in accredited laboratories to international standards.

## Typical properties

Colorcoat® Product	PVDF	Test standard
Nominal organic coating thickness	25 µm	EN 13523 - 1
Specular gloss (60°)	10 - 35 %	EN 13523 - 2
Scratch resistance	> 3000 g	EN 13523 - 12
Abrasion resistance (Taber, 250 rev, 1 kg, CS10 wheels)	< 30 mg	EN 13523 - 16
Flexibility – Minimum bend radius	1.5 T	EN 13523 - 7
Adhesion	100 % Pass	EN 13523 - 6
Corrosion resistance – Salt spray Humidity	500 hours 1000 hours	EN 13523 - 8 EN 13523 - 25
UV resistance	Excellent	EN 10169
Fire classification	A2	EN 13501 - 1

## General notes

The figures contained in this table are typical properties and do not constitute a specification. These figures relate to the topcoat and solid colours. For details on test methods see [www.colorcoat-online.com](http://www.colorcoat-online.com)

## Contact details

### Corus Shotton Works

Deeside, Flintshire CH5 2NH  
United Kingdom

### Colorcoat Connection® helpline

T: +44 (0)1244 892434  
F: +44 (0)1244 831132  
E: [colorcoat.connection@corusgroup.com](mailto:colorcoat.connection@corusgroup.com)

### Corus IJmuiden

Corus Colors  
Postbus 10.000, 1970 CA IJmuiden  
Nederland

### Colorcoat Connection® helpline

T: +31 (0)251 492206 (NL)  
T: +32 (0)70 233009 (B)  
E: [colorcoat.connectionEU@corusgroup.com](mailto:colorcoat.connectionEU@corusgroup.com)

## Trademarks of Corus

Colorcoat and Colorcoat Connection are registered trademarks of Corus.

Corus is part of the Tata Steel group.

Care has been taken to ensure that the contents of this publication are accurate, but Tata Steel UK Limited and its subsidiaries do not accept responsibility or liability for errors or information that is found to be misleading. Suggestions for, or descriptions of, the end use or application of products or methods of working are for information only and Tata Steel UK Limited and its subsidiaries accept no liability in respect thereof.

Before using products or services supplied or manufactured by Tata Steel UK Limited and its subsidiaries, customers should satisfy themselves as to their suitability.